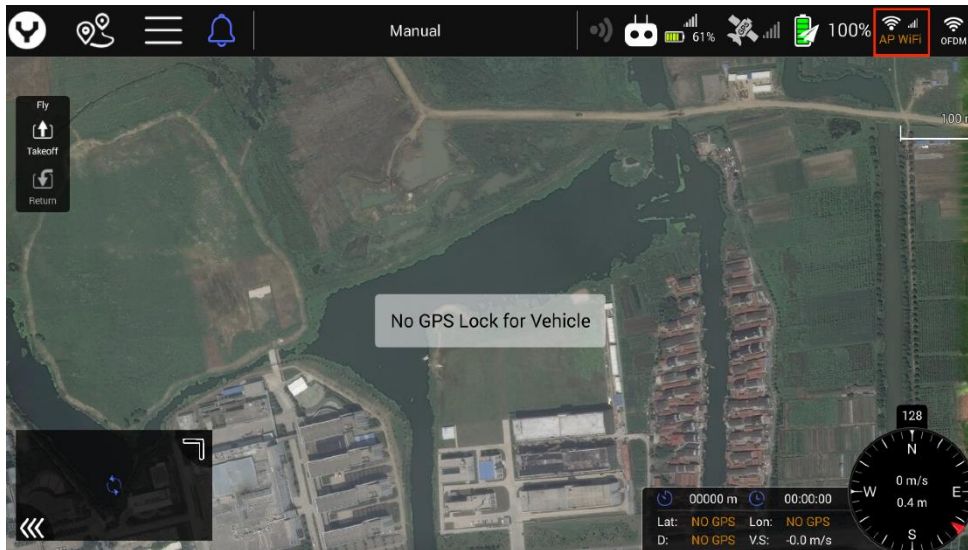
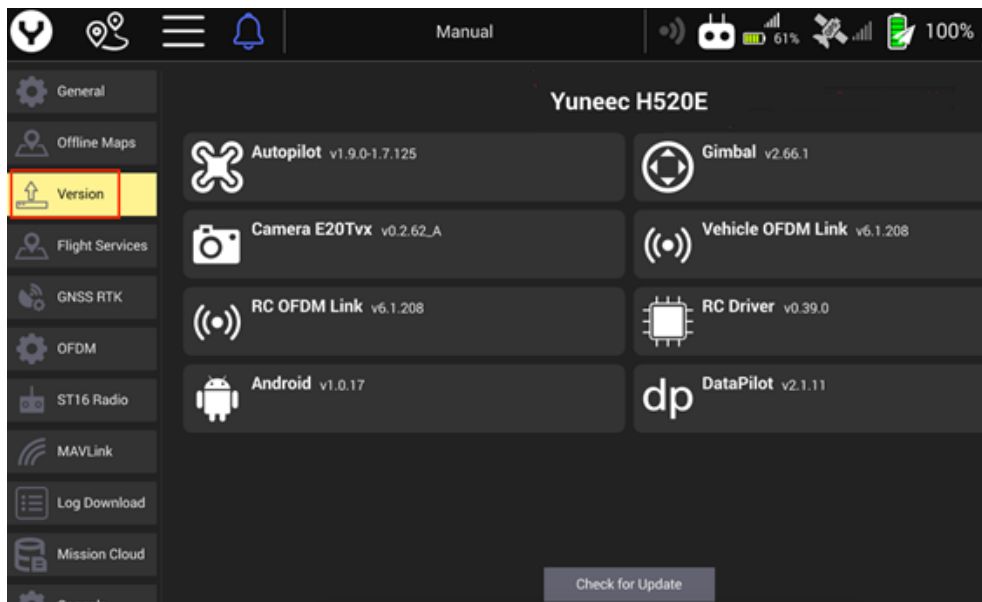


## H520E OTA Update.

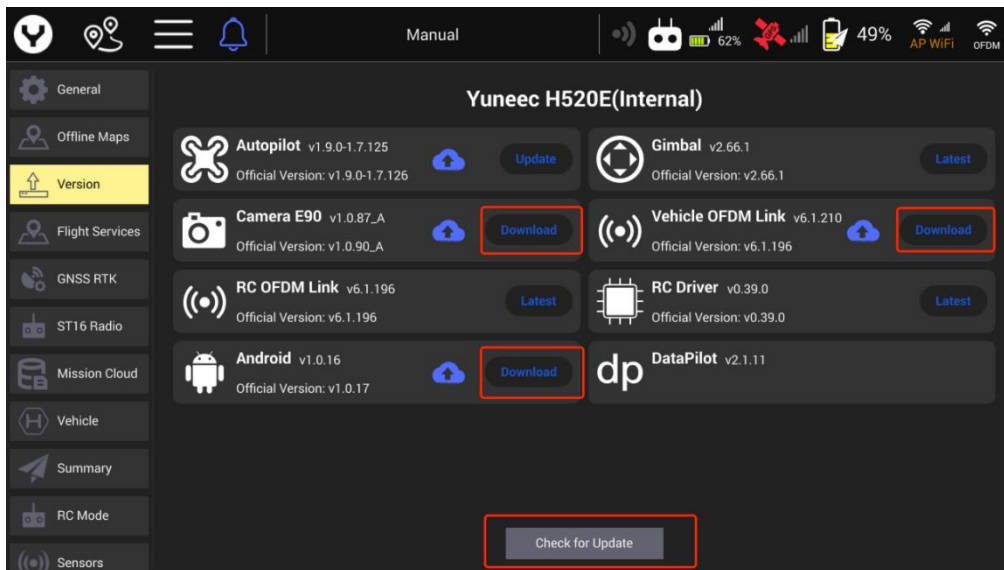
1. Connect your ST16E to your local network via clicking “wifi icon” the right up position in the screen.



2. Click the “Version” button, then you can see the firmware versions of all components



3. Click on the “Check for Update” button, the app will check all firmware versions. If the component need to be updated, a “Download” button will be displayed beside the component’s name.



4. Click the “**Download**” button of the component that you want to update. After finishing downloading, an “**Update**” button will appear. Click on “**Update**” to upgrade the component.

Note:

- Please plug the USB cable between remote controller and OFDM component before updating the drone, OFDM module, camera and gimbal component.
- Please make sure that a SD card is inserted in the camera.



**IMPORTANT:**

If the Data Pilot app is unable to get the firmware versions from the “Version” section, please delete the app and install the new version app from our Website.